

THE CIRCUIT!

February 2018

A publication for our Members
in Atoka•Bryan•Choctaw
Coal•Johnston Counties

Space Heater Safety

Winter weather has us all running for a warmer spot. Staying comfortable in our homes is important. What is even more important is that we do this *safely*.

Not only do you need to consider the dangers of a space heater, you need to look at the impact it can have on your electric bill.

Every year, homes are destroyed due to fires caused by electrical space heaters. You can lessen your chances of a possible disaster situation by using your heater wisely.

Ideally, nothing can replace the efficiency and functionality of a central heating and air unit, but when supplemental measures are needed you can follow these helpful “Do’s & Don’ts” from the list on the right.

If you are curious how much electricity your space heater is pulling through your meter and costing you, visit EnergyUseCalculator.com and click on Space Heater from the bulleted list on the right of the website.



DO'S

- Keep your heater away from combustible materials like beds, sofas and blankets.
- Inspect the cords on your heater to make sure there is no fraying or damage.
- Keep your heater on a stable surface at all times.
- Make sure your “plug is snug” in the outlet.
- Always double check your smoke alarms.

DON'TS

- Do not use an extension cord or power strip on your space heater.
- Do not use your heater if the power cord or wall feels hot to the touch. Call an electrician.
- Do not run your power cords under rugs, carpets or furniture.
- Do not leave your heater on when you are not in the same room for an extended period of time.

SEC Involved With Special Olympics

Every year, SEC employees volunteer their time and efforts to the Red River Area 13 Special Olympics. For the Winter Music and Arts Festival that takes place early in the year and the Spring Track and Field events several months later, our employees make a difference.

During the Music and Arts Festival, Kevin Rothrock, SEC Public Relations, sits as a guest judge alongside other known faces in the community. At this event, Special Olympic athletes show their talents with singing, dancing, playing instruments and even a stand up comedy act on occasion. This year, the Festival will be held on Wednesday, February 14th at the Choctaw Event Center.



Along with providing a guest judge, SEC also hands out participation medals to all of the athletes. The individuals look forward to these medals and proudly show them off to friends and family.

At the Track and Field Event, SEC hosts the Stars of the Future. This special group consists of children who are eight years old and younger who cannot participate in the big track and field activities due to age. An obstacle course geared towards smaller athletes is assembled and SEC employees help them complete the course.

One of the Seven Cooperative Principles is “Commitment to Community.” Through events like these with the Special Olympics, SEC is able to actively demonstrate that principle.***



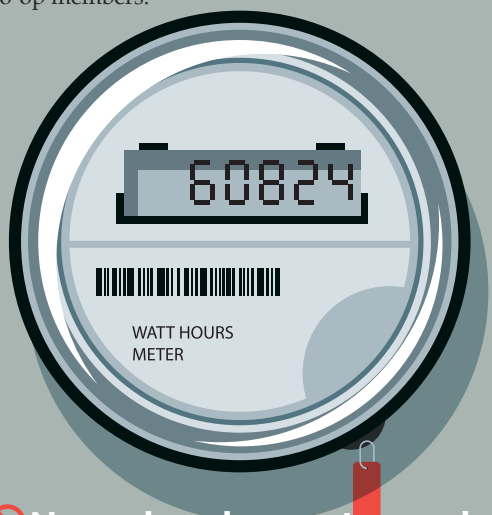
Doing renovations or digging?

Be sure and play it safe by calling OKIE811 at least 48 hours before you dig.

A Notice To Our Members

DO NOT TAMPER WITH YOUR ELECTRIC METER

Meter tampering can result in electric shock, is illegal and increases electricity rates for other co-op members.



- ⊘ Never break a meter seal.
- ⊘ Never open a meter base.
- ⊘ Never remove a meter or alter an entrance cable in any manner.

If you know or suspect that someone has tampered with their meter, please contact us immediately.

SEC would like to remind our Members that meter tampering is a crime that is punishable by a hefty fine or six months imprisonment in the county jail.

The Co-op defines meter tampering as *breaking a meter seal, opening a meter base, removing a meter, or altering an entrance cable in any manner.*

Not only is it a crime when meter tampering occurs, it also costs all Southeastern Electric Members. Costly repairs have to be made to the equipment along with the time our linemen have to be out replacing materials.

Since everyone pays for lost power, please let SEC know if you suspect meter tampering.

If you think someone is using Co-op power without paying for it, or if you have information related to electricity or theft of Co-op materials, please call the Co-op at 1-866-924-1315. **Rest assured we will keep your information anonymous.*****

This institution is an equal opportunity provider and employer.

The Circuit! is composed monthly by



Southeastern Electric Cooperative

P.O. Box 1370
Durant, OK 74702

General Manager
Larry Speaks

Editor
Kevin Rothrock

Physical Address
1514 E. Hwy 70
Durant, OK 74701

Contact us at:
(580) 924-2170
After hours at:
(580) 924-1315
Toll Free at:
(866) 924-1315

Office Hours
Monday-Friday
8:00 a.m.-5:00 p.m.

Website
www.se-coop.com

Pay your bill online at www.se-coop.com or by calling 1.888.260.6597

Board of Trustees

- Dist. 1: Tracy Rogers
- Dist. 2: Dennis Bowen
- Dist. 3: Lloyd G. Owens
- Dist. 4: David Kelly
- Dist. 5: Casey Robinson
- Dist. 6: Anthony Dillard
- Dist. 7: David Blackburn
- Dist. 8: James M. Dancer
- Dist. 9: Jeff Willingham

Ways To Pay Your Bill

SEC has numerous ways that a Member can pay their bill. We try to be very accomodating for our Members and provide ample methods to settle an account balance. Here are the different ways you can pay:

- Mail in your payment to P.O. Box 1370, Durant, OK 74701.
- Call in your payment over the phone (580-924-2170) to our offices during regular business hours.
- Use the overnight drop-box for checks only. *We ask that you do not put cash into the overnight drop-box.*
- Using one of the many US Payment kiosks located across our service territories.
- Setting up an automatic bank draft.
- By coming to the office in Durant. *Be sure you bring your most current bill!*
- Stay in your vehicle and use our drive thru!

SEC will accept most forms of payment. *Please note that US Payment kiosks do not provide change.*

Is PrePay Right For You?



Are you facing a large deposit to have your electricity turned on? Are you wanting to monitor your energy useage more closely? Did you put up a deposit when you became a Member? If you answered “yes” to any of these, you may want to consider PrePay Metering!

With PrePay Metering, a Member can forgo the large deposit to have their electricity turned on. You pay \$100.00 start up fee (which will be applied directly to your account as a credit), a small Membership fee and a \$35.00 connect

fee. Then you are all set to go as a PrePay Member!

You can easily monitor your energy use with a PrePay Meter. Since you pre-pay for what you will use, it can make a Member more aware of how their kilowats are consumed. Alerts are sent out via text message once a specific balance that is chosen by the Member has been reached. Then you know it is time to add more money to your account balance.

Those who put up a deposit when they became a Member can use that deposit to switch over to a PrePay Meter account and may have a credit as a result! For more information about our PrePay Program, please contact our offices at 580-924-2170 today!***